

## QFIT COLLECTION KIT


**A faecal sample collection kit used for the collection and transportation of samples for laboratory analysis of human haemoglobin (blood)**


This kit contains the materials required for either sample self-collection or collection by a health/social care professional.


**IVD** For *in vitro* diagnostic use, sample self-collection


**REF** KT362

**UK  
CA**

 Carefully read the enclosed instruction leaflet before use

 Important: Do not use kit if security seal is broken. Keep out of reach of children

 Do not re-use

 18+ For use by persons aged 18 and over

### Sample collection instructions (Steps 1–11)

- Please ensure the kit is within expiry date and read these instructions carefully and completely before attempting to collect the sample.
- If your kit requires online activation, please follow the instructions provided by your healthcare organisation. If you need assistance please contact the healthcare organisation who arranged the test.
- For alternative language versions of these kit instructions please visit [www.tdlpathology.com](http://www.tdlpathology.com)

### Your sample collection kit contents

Please check that the kit contains all of the items outlined below. Do not proceed with sample taking if any items are missing, contact the healthcare organisation who arranged your test for assistance.



Green sampling stick and tube for taking your sample €€



Protective packing case

First name: \_\_\_\_\_  
Surname: \_\_\_\_\_  
DOB: \_\_\_\_\_  
Sample type: \_\_\_\_\_  
TAN9358822-10-20-97

Sample label



Return security label



Collection kit outer box



Return postal envelope

## FIT TEST (QFIT) SAMPLE COLLECTION

### About the FIT Test (QFIT)

This is a simple test that looks for tiny amounts of blood in your bowel motion (also called a stool). In order to do this test you will need to produce a bowel motion.

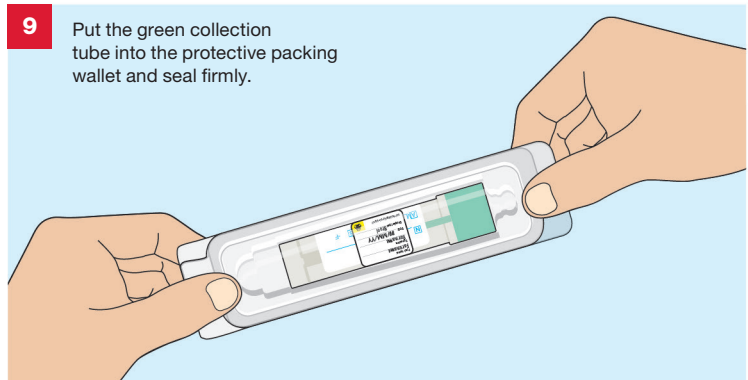
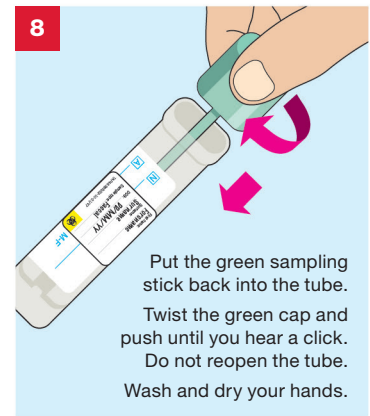
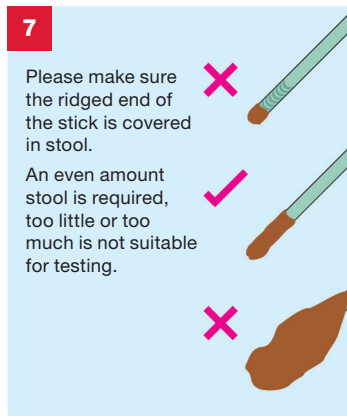
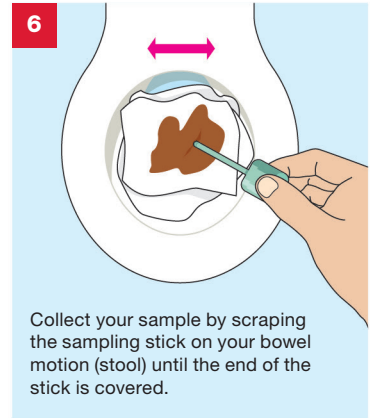
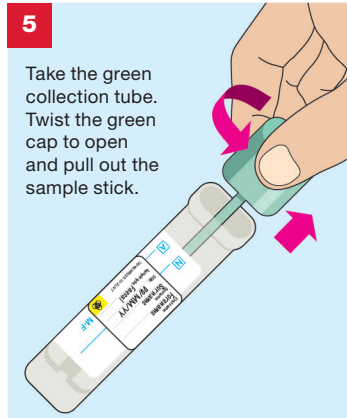
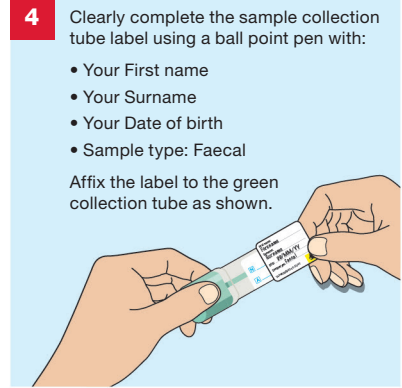
- 1** If not already pre-populated please complete the test request form, provided by your doctor/clinic, separate to this kit. **Make sure the sample date is completed.**



- 2** The test can be done at any time of day or night. Place a bed of toilet paper in the bowl to make it easier to collect your sample. Perform your bowel motion. If possible, try to prevent the sample from touching the water.



Wash and dry your hands.



- 10** Please make a note of the unique tracking number displayed under the barcode on the postal tracking label, as shown below. Keep this in a safe place for future reference. **You can track delivery of your Royal Mail parcel by entering this number using the following link:** <http://www.royalmail.com/track-your-item>



**Write your tracking number here for reference – keep this safe.**

# 11 IMPORTANT CHECKLIST

Before you return your sample please do the following:

- Place your completed request form supplied by your doctor/clinic into the postal envelope
- Make sure that the green collection tube is labelled and has been placed inside the protective packing case
- Place the protective packing case into the collection kit outer box
- Close the collection kit outer box firmly and apply the return security label to seal it
- Place the collection kit outer box into the return postal envelope
- Check that you have taken note of your postal tracking number

You are now ready to seal the postal envelope.  
Please store at room temperature until posted.

Please post your sample to **The Doctors Laboratory** as soon as possible (ideally on same day or within 24 hours of sample collection) from **ANY** Royal Mail post box in the UK. No stamp is required within the UK.

If you need assistance please contact The Doctors Laboratory on 020 7307 7373 or email [samples@tdlpathology.com](mailto:samples@tdlpathology.com).

## Warnings and precautions

- This kit is designed for use by persons aged 18 and over and upon request of a healthcare professional or healthcare organisation.
- The kit should not be used by individuals lacking the physical or mental capacity to correctly follow the self-collection instructions. If you have problems please consult with your advising healthcare professional.
- Do not place the sampling stick directly into your body. The QFIT sample bottles are designed for collecting faecal samples, no other sample types.
- Do not obtain faecal samples during menstruation (your period) and avoid sample contact with lubricants, bleach and toilet cleaners.
- If your stool sample is excessively watery or hard please discuss this with your healthcare professional to ensure you are collecting a suitable sample for testing.
- Do not break the bottle seals, add water or remove the buffer.
- Liquid contained in the sealed sampling tube contains a hazardous material, sodium azide (NaN<sub>3</sub> <0.1%). Avoid contact with skin, eyes and mouth. In case of exposure, wash vigorously with water and contact a doctor for treatment advice. Further information can be found at [www.fit-screening.co.uk](http://www.fit-screening.co.uk)
- Some haemoglobin variants may interfere with QFIT results, these results should be interpreted with caution.
- The accuracy of your results may be compromised if you do not read and follow the instructions in full.
- Samples arriving at the laboratory which show signs of degradation or general damage or arrive after 14 days of sample taking may not be tested.

## Materials required but not provided

### • Test request form

This will be provided by your healthcare professional or healthcare organisation.

**Please complete the request form with your details as instructed.**

Request Form  
Name: \_\_\_\_\_  
Address: \_\_\_\_\_  
Date: \_\_\_\_\_  
Sex: \_\_\_\_\_  
Details: \_\_\_\_\_  
\_\_\_\_\_

### • Clean tissue paper

## Laboratory Tests

- The tests and procedures undertaken by The Doctors Laboratory Limited are verified and performed in line with supplier product instructions for use and supported by additional validation data for use with self-collected capillary blood.
- Test results are provided in line with clinically approved results pathways, agreed between The Doctors Laboratory Limited and the patients designated healthcare professional or healthcare organisation.

## KEY TO SYMBOLS

IVD	For <i>in vitro</i> diagnostic use	Manufacturer	UK CA	UK Conformity Assessed
REF	Catalogue number	4°-25° Temperature limits: 4°-25°C	CE	EU Conformity Assessed
LOT	Batch code	Caution, consult accompanying documents	No re-use	
Biological risk. Biological sample, treat as potentially infectious		Keep away from sunlight	Consult instructions for use	
Use by end of year-month		Keep dry	18+	For use by persons aged 18 and over

**MedDX Services Ltd**  
Unit 2 Newtons Court, Crossways Business Park  
Dartford, Kent, DA2 6QL, UK  
E-mail: [support@mdxsvc.com](mailto:support@mdxsvc.com) Website: [www.mdxsvc.com](http://www.mdxsvc.com)

**The Doctors Laboratory Limited**  
Distribution is restricted to regions in which the product is registered by the manufacturer.